

# Specifications of Hybrid Building Unit

The turnkey building units will have the following specifications by default:

## General

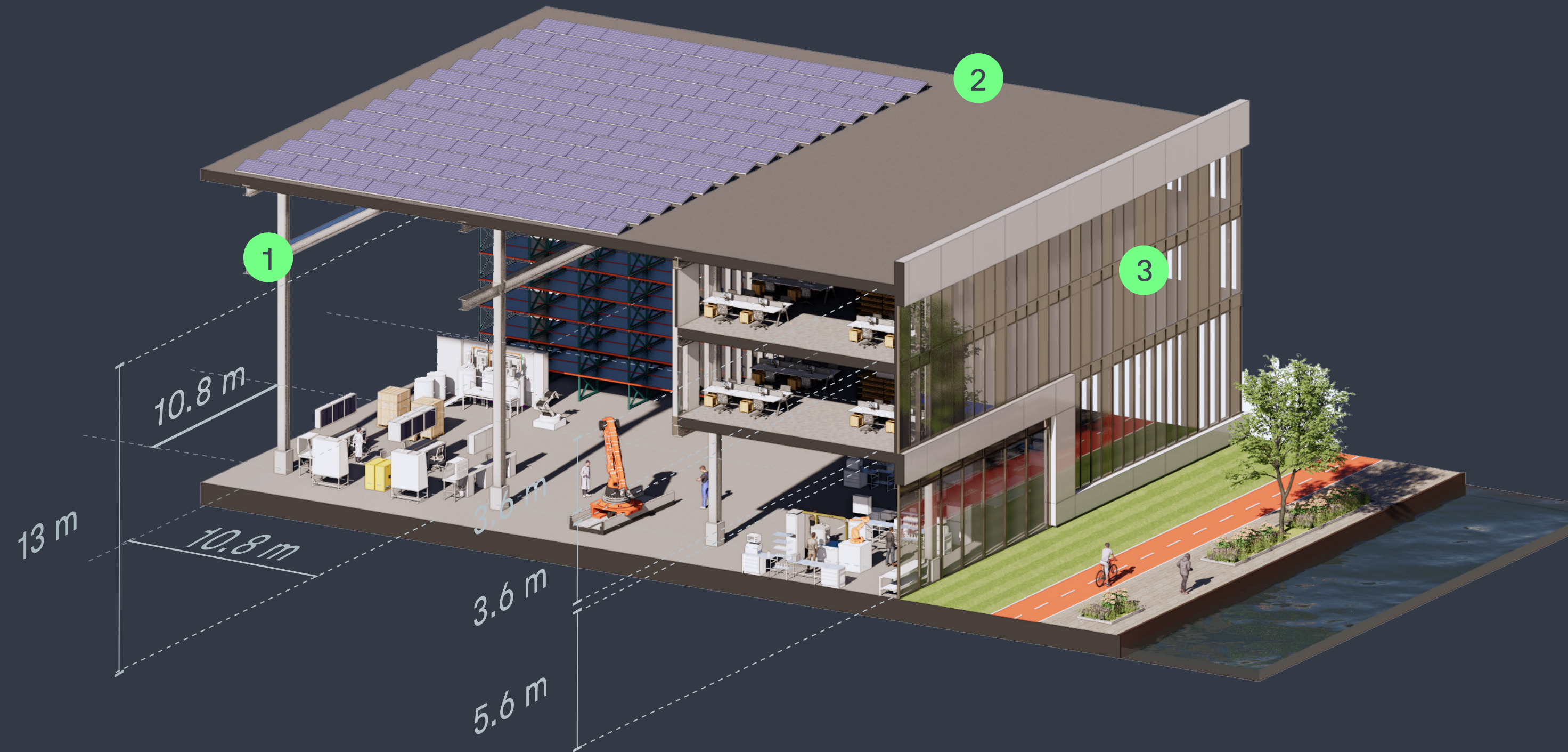
- No gas & BENG;
- Designed in accordance with the Design for Disassembly principles.

## Utilities

- Current electric connection;
- Current sewer and water connection;
- Energy-efficient lighting, 500 lux by default; can be expanded to 1000 lux;
- Emergency lighting;
- Fire hose reels;
- Rainwater drains.

## Other features

- Free height of 13 metres;
- Free span of 21.60 metres (full width);
- Concrete floor on ground level, max load 4,000 kg/m<sup>2</sup>.



## 1 Structure

- The foundation and steel structure feature all facilities required for additional floors, pavilions and cranes.

## 2 Roof

- The steel roof structure features PIR insulation with an RC value of 6.0 and PVC roof cladding;
- The roof is equipped with permanent fall protection and safe access;
- The roof is suitable for solar panels.

## 3 Facades

- The facades consist of steel sandwich panels with an RC value of 4.5 interspersed with glass curtain walls to create an open look;
- The building has two logistical loading docks including a loading bay and a single overhead door;
- Advertisement is permitted in consultation with the campus management and architect.